

# ONSITE+

Long Series Step Tip Drill Bit

THE LATEST **ONSITE TECHNOLOGY**

Unique  
Patented  
**STEP TIP**

**AlTiN**  
COATING

  
**Alpha**  
NO DOUBT

# ONSITE+

## Long Series Step Tip Drill Bit

Unique  
Patented  
STEP TIP

AlTiN  
COATING

NON-SLIP  
SHANK

EXTRA LOOOONG  
FOR HARD-TO-REACH DRILLING

Take your drilling projects to the next level with Alpha's new Onsite+ Long Series Step Tip Drill Bit. Featuring our unique patented step tip design, this innovative tool ensures perfectly precise holes without the need for pre-drilling in awkward and hard-to-reach areas.

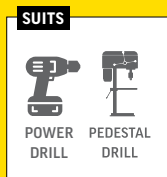
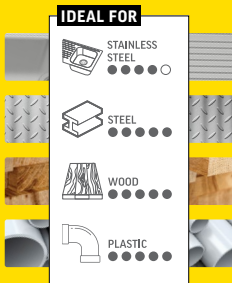
We've taken our revolutionary patented Step Tip design, coated it with premium, heat resistant AlTiN, added a non-slip shank and have come up with a range of long drill bits available in both metric AND imperial sizes.

This versatile drill bit is perfect for carpenters, plumbers, electricians, and tradespeople who need tools that deliver top-tier performance, in the trickiest situations.

Engineered with M2 High-Speed Steel (HSS) and coated with AlTiN for resistance to extreme temperatures, the Onsite+ Long Series Drill Bit offers unmatched durability and longevity.

Whether you're drilling deep holes through plaster or timber framing, feeding wiring through thick walls and flooring, or ensuring precise alignment for structural bolts and threaded rods, the Onsite+ Long Series Step Tip Drill Bit is your go-to solution for hard-to-reach or tight, recessed areas.

STEP TIP DESIGN  
NO NEED TO DRILL PILOT HOLES



SCAN & SEE Onsite+  
Long Series Step Tip  
Drill Bit in action!



## PERFECT FOR A VARIETY OF DIFFICULT MATERIALS



Unique patented step  
tip design eliminates  
pre-drilling

Fully ground M2  
HSS raw material  
for extended life

AlTiN Coated for  
extreme temperature  
resistance & long  
service life

3-Flat shank  
prevents slippage  
in chuck

### IMPORTANT TIP



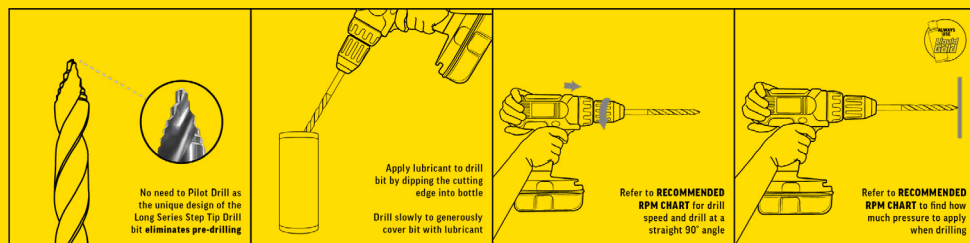
# BEST PRACTICE GUIDELINES


The Alpha Onsite+ Long Series Step Tip Drill Bit is part of Alpha's Onsite+ range, designed specifically to perform with maximum efficiency so you can save time onsite and knock off early.


- Always apply lubricant before drilling
- Make sure you drill straight/at a 90° angle continuously
- Apply recommended RPM and pressure

Always use the appropriate lubricant when drilling to ensure product efficiency and longevity. Consistently applying lubricant will protect bit against heat and friction and provide excellent surface finish.

Always wear Personal Protective Equipment (PPE) when using power tool accessories. Bits can become very hot with continuous usage.



| STEP TIP - METRIC |        |       | <br>CARDED<br>1 PCE |
|-------------------|--------|-------|--|
| ø mm              | OAL mm | FL mm |  |
| 3.0               | 130    | 70    | 9STEM030   |
| 3.3               | 106    | 69    | 9STEM033   |
| 3.5               | 137    | 76    | 9STEM035   |
| 3.8               | 119    | 78    | 9STEM038   |
| 4.0               | 146    | 86    | 9STEM040   |
| 4.5               | 146    | 86    | 9STEM045   |
| 5.0               | 152    | 92    | 9STEM050   |
| 5.5               | 152    | 92    | 9STEM055   |
| 6.0               | 156    | 95    | 9STEM060   |
| 6.5               | 159    | 98    | 9STEM065   |
| 7.0               | 159    | 98    | 9STEM070   |
| 8.0               | 165    | 105   | 9STEM080   |
| 9.0               | 171    | 108   | 9STEM090   |
| 10.0              | 178    | 111   | 9STEM100   |
| 11.0              | 184    | 117   | 9STEM110   |
| 12.0              | 197    | 121   | 9STEM120   |
| 13.0              | 203    | 121   | 9STEM130   |

| STEP TIP - IMPERIAL |        |       | <br>CARDED<br>1 PCE |
|---------------------|--------|-------|--|
| ø in                | OAL mm | FL mm |  |
| 1/8"                | 131    | 70    | 9STELI18   |
| 9/64"               | 137    | 76    | 9STELI964  |
| 5/32"               | 137    | 76    | 9STELI532  |
| 11/64"              | 146    | 86    | 9STELI1164   |
| 3/16"               | 147    | 87    | 9STELI316  |
| 13/64"              | 152    | 92    | 9STELI1364   |
| 7/32"               | 152    | 92    | 9STELI732  |
| 15/64"              | 158    | 97    | 9STELI1564   |
| 1/4"                | 158    | 97    | 9STELI14   |

Scan QR Code for more product information, videos and testing data



For product warranty information and Alpha Tool's policies, please visit [www.alphatools.com.au/warranty-policy/](http://www.alphatools.com.au/warranty-policy/)