

ONSITE+

Step Tip

Combination Drill & Tap

THE LATEST **ONSITE TECHNOLOGY**

6x
SPEED

Unique
Patented
STEP TIP

AlTiN
COATING


Alpha
NO DOUBT

ONSITE+

Step Tip Combination Drill & Tap

**6X
SPEED** **Unique
Patented
STEP TIP** **AlTiN
COATING**

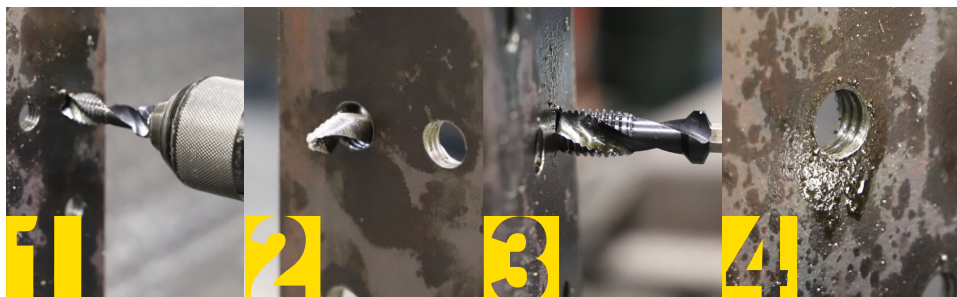
Which is faster? Drilling a hole with a standard HSS jobber drill, then switching to a HSS tap to thread the hole, or using a combination drill and tap that does both actions in one smooth motion?

The answer is pretty obvious; a combination drill and tap! Now, let's take it up a notch.

Imagine the advanced efficiency of a combination drill and tap integrated with the Alpha Onsite+ unique patented step tip design. Not only does this added benefit remove the need to pre-drill, but also minimises wandering AND creates perfectly round, burr-free holes everytime.

The Onsite+ Step Tip Combination Drill and Tap makes the whole process six times faster than conventional combination drill and taps by combining several separate drilling processes into a single, game-changing tool – saving you time and money!

Complete the entire drill and tap process in just four seamless steps:



No pre-drilling necessary. The unique patented step tip design eliminates pre-drilling, so you can go straight into drilling.

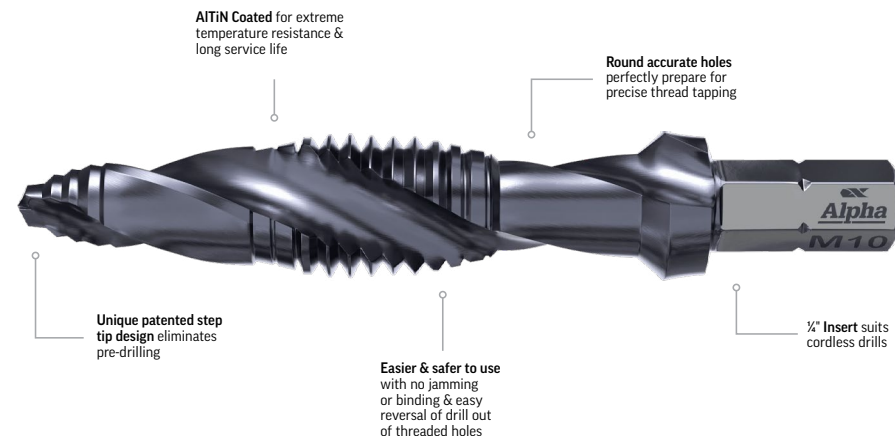
Next, it creates a perfectly centred, burr-free hole using a cordless drill and cutting fluid.

The bit then smoothly threads and taps the hole—no jamming, no binding, and easy drill reversal from the threaded hole.

Create a clean and smooth finish with the countersink feature ensuring a precise, flush chamfer.



SCAN & SEE Onsite+ Step Tip
Combi Drill & Tap in action!



Drill, tap and countersink your way through mild steel, aluminium and stainless steel with the following features:

No More Pre-Drilling: Unique patented step tip design eliminates pre-drilling.

Heat Resistant: AlTiN Coated for extreme temperature resistance and long service life.

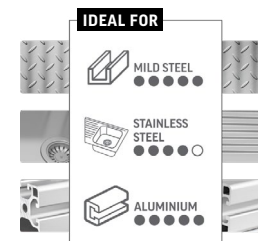
No Jams or Binds: Easier and safer to use with no jamming or binding, and effortless drill reversal out of threaded holes.

Precise Tapping: Round accurate holes perfectly prepare user for precise thread tapping.

Versatile Material Application: Ideal for drilling through mild steel, stainless steel, aluminium and other non-ferrous metals.

Insert shank: The 1/2" insert shank suits cordless drills.

SIZES	SUITS
M3 x 0.5 M4 x 0.7 M5 x 0.8 M6 x 1.0 M8 x 1.25 M10 x 1.5 M12 x 1.75	POWER DRILL
7 PCE Set 17 PCE Set	



ONSITE+

Step Tip Combination Drill & Tap

DISCOVER THE RANGE:



M3 x 0.5
CODE: DTSTM030



M4 x 0.7
CODE: DTSTM040



M5 x 0.8
CODE: DTSTM050



M6 x 1.0
CODE: DTSTM060



M8 x 1.25
CODE: DTSTM080



M10 x 1.5
CODE: DTSTM100



M12 x 1.75
CODE: DTSTM120



Step Tip Combination Drill & Tap | 7 PCE

Sizes: M3 x 0.5, M4 x 0.7, M5 x 0.8, M6 x 1.0, M8 x 1.25, M10 x 1.5 & M12 x 1.75mm

CODE: SM7DTST



Step Tip Drill Bit & Step Tip Combination Drill & Tap | 17 PCE

Step Tip Drill Bit Sizes: 4.0, 4.5, 5.0, 5.5, 6.0, 7.0, 8.0, 9.0, 10.0 & 12.0mm

Step Tip Combi Drill & Tap Sizes: M3 x 0.5, M4 x 0.7, M5 x 0.8, M6 x 1.0, M8 x 1.25, M10 x 1.5 & M12 x 1.75mm

CODE: SM17DTST

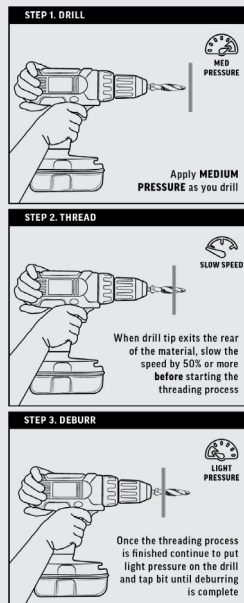
BEST PRACTICE GUIDELINES

The Alpha Onsite+ Step Tip Combination Drill & Tap is part of Alpha's Onsite+ range, designed specifically to perform with maximum efficiency so you can save time onsite and knock off early.

- Always apply lubricant before drilling into metal
- Make sure you drill straight/at a 90 angle continuously
- Maximum material thickness (all metals) is 1x diameter - eg. M8 has a maximum material thickness of 8mm
- This range is not impact rated - for use in corded and cordless drills only
- Follow best practice guidelines for the best outcome and to maintain tool bit strength and longevity

Always use the appropriate lubricant when drilling to ensure product efficiency and longevity. Consistently applying lubricant will protect bit against heat and friction and provide excellent surface finish.

BEFORE USE
SCAN QR CODE TO SEE FULL
BEST PRACTICE GUIDELINES



POWERED BY **Sheffield GROUP**

T 02 4957 8787 F 02 4957 3737
111 Munibung Road Boolaroo 2284

alphatools.com.au

E hello@alphatools.com.au
PO Box 687 Cardiff 2285 NSW Australia

