



# ONSITE+

IMPACT Step Tip Drill Bit

YOUR NEW **ONSITE COMPANION**

  
**Alpha**  
NO DOUBT

# ONSITE+

## IMPACT Step Tip Drill Bit

**6x  
SPEED**

**Unique  
Patented  
STEP TIP**

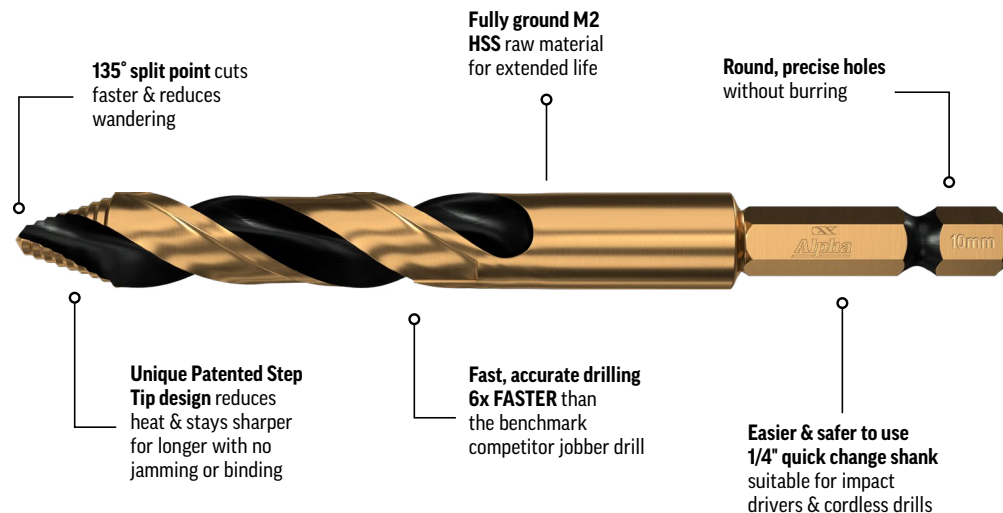
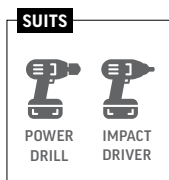
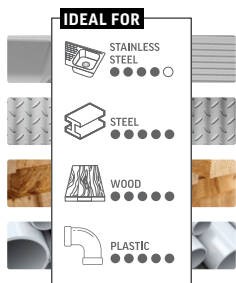
A tradie knows that drilling holes is just part of the job. But who wants to be stuck onsite doing that all day?

That's where our new Alpha Onsite Plus Impact Step Tip Drill comes in, perfectly designed for any hard-working tradie who just wants a fast, no-fuss job... and an early knock-off.

This product is a game changer, guaranteed to drill six times faster than the market standard, stay sharper for longer with its unique step tip design, and create the perfect, burr-free hole.

Expertly engineered out of fully ground premium M2 HSS, it's ideal for a wide range of materials, including steel, wood, plastic, and stainless steel.

Plus, no drill jamming or binding means your customers can get the job done safer, easier and in record time.



Alpha **ONSITE+** Step Tip Drill was tested by our experts against the Benchmark Competitor Jobber Drill and blew the competition out of the water with speed, durability and accuracy.

The competitor drilled 2.5 holes in 1 minute and 46 seconds before burning out. Whereas the Alpha **ONSITE+** Step Tip Drill Bit smashed out 3 perfect holes in just 21.83 seconds.

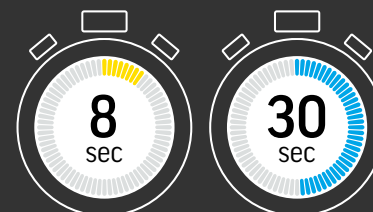
Tests were conducted with a 18V Makita Cordless Drill into 8mm steel plate.



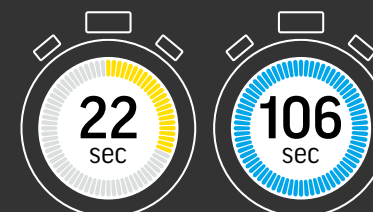
FOR BEST PRACTICE GUIDELINES  
& IN-USE VIDEOS SCAN QR CODE



AVERAGE DRILL TIME PER **INDIVIDUAL HOLE**



DRILL TIME PER **3 HOLES**



Alpha **ONSITE+** Step Tip Drill 10.0mm

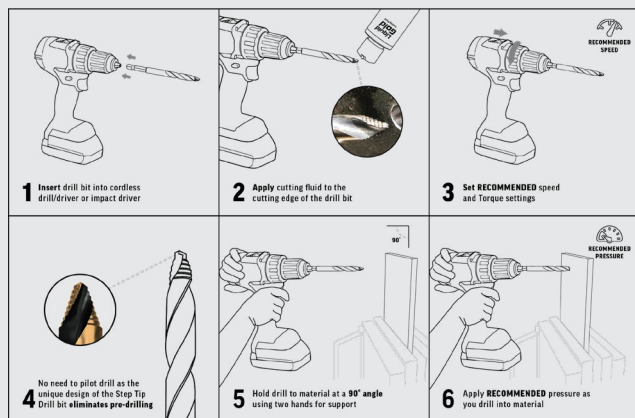
Benchmark Competitor Jobber Drill 10.0mm

# BEST PRACTICE GUIDELINES

The Alpha Onsite+ Step Tip Drill Bit is part of Alpha's Onsite+ range, designed specifically to perform with maximum efficiency so you can save time onsite and knock off early.

- Always apply lubricant before drilling into metal
- Make sure you drill straight/at a 90° angle continuously
- While all ONSITE+ Step Tip Drill bits are Impact Rated, our experts have found that in some cases using a Cordless Drill/Driver will give you longer life and better performance when drilling a large number of holes at a time
- To find custom recommended guidelines for your project, scan QR code below

Always use the appropriate lubricant when drilling to ensure product efficiency and longevity. Consistently applying lubricant will protect bit against heat and friction and provide excellent surface finish.



### BEFORE USE

SCAN QR CODE TO DISCOVER  
THE BEST PRACTICE GUIDELINES  
TAILORED TO YOUR PROJECT



CARDED  
1 PCE

STEP TIP - METRIC			
ø mm	OAL mm	FL mm	
3.0	62	28	C9STQRM030
3.2	62	28	C9STQRM032
3.3	62	28	C9STQRM033
3.5	66	30	C9STQRM035
4.0	70	31	C9STQRM040
4.2	70	31	C9STQRM042
4.5	73	31	C9STQRM045
4.8	73	31	C9STQRM048
5.0	75	31	C9STQRM050
5.5	78	35	C9STQRM055
6.0	80	37	C9STQRM060
6.5	81	38	C9STQRM065
6.8	83	39	C9STQRM068
7.0	83	39	C9STQRM070
7.5	88	43	C9STQRM075
8.0	101	51	C9STQRM080
8.5	101	51	C9STQRM085
9.0	101	51	C9STQRM090
9.5	101	51	C9STQRM095
10.0	101	51	C9STQRM100
10.2	101	51	C9STQRM102
10.5	101	51	C9STQRM105
11.0	101	51	C9STQRM110
11.5	101	51	C9STQRM115
12.0	101	51	C9STQRM120
12.5	101	51	C9STQRM125
13.0	101	51	C9STQRM130

No. of Pieces	SET CONTENTS	SET CODE
10 PCE	4.0, 4.5, 5.0, 5.5, 6.0, 7.0, 8.0, 9.0, 10.0, 12.0	SM10ST
16 PCE	4.0, 4.5, 5.0, 5.5, 6.0, 6.5, 7.0, 7.5, 8.0, 8.5, 9.0, 9.5, 10.0, 12.0, 13.0	SM16ST
23 PCE	3.0, 3.2, 3.3, 3.5, 4.0, 4.2, 4.5, 4.8, 5.0, 5.5, 6.0, 6.5, 6.8, 7.0, 7.5, 8.0, 8.5, 9.0, 9.5, 10.0, 11.0, 12.0, 13.0	SM23ST

©COPYRIGHT SHEFFIELD GROUP 2025. No part of this publication may be copied, scanned or reproduced in whole or part in any form without written permission from Sheffield Group. E&OE.