

BEST PRACTICE GUIDELINES

The Alpha Onsite+ Long Series Step Tip Drill Bit is part of Alpha's Onsite+ range, designed specifically to perform with maximum efficiency so you can save time onsite and knock off early.

The Onsite+ Long Series Step Tip Drill Bits are available in the following sizes:

Metric - 3.0, 3.3, 3.5, 3.8, 4.0, 4.5, 5.0, 5.5, 6.0, 6.5, 7.0, 8.0, 9.0, 10.0, 11.0, 12.0 & 13.0mm

Imperial - 1/8", 9/64", 5/32", 11/64", 3/16", 13/64", 7/32", 15/64" & 1/4"

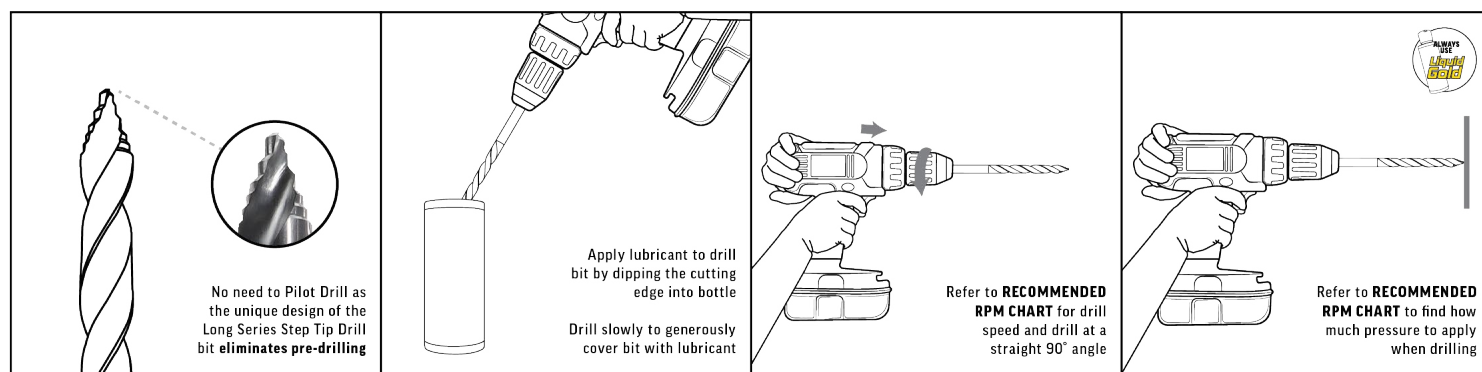
Developed in-house using our patented step tip design to eliminate pre-drilling and produce perfectly centered, clean cut and burr-free holes. Each drill bit is coated with AlTiN for extreme temperature resistance and long service life and has a straight shank for convenient in a cordless drill and pedestal drill.

Instructions

- Always apply lubricant before drilling
- Make sure you drill straight/at a 90° angle continuously
- Apply recommended RPM and pressure

Always use the appropriate lubricant when drilling to ensure product efficiency and longevity. Consistently applying lubricant will protect bit against heat and friction and provide excellent surface finish.

Always wear Personal Protective Equipment (PPE) when using power tool accessories. Bits can become very hot with continuous usage.



RECOMMENDED RPM CHART - CORDLESS DRILL

| Drill Ø | Material | Material Thickness | Speed | Pressure |
|---------|--------------------------|--------------------|------------------------------|-------------|
| 5.0mm | Aluminium Flat Bar | 3.0mm | High (up to 2,600 RPM) | Med - High |
| 8.0mm | Aluminium Flat Bar | 3.0mm | High (up to 2,600 RPM) | Med - High |
| 12.0mm | Aluminium Flat Bar | 3.0mm | High (up to 2,600 RPM) | Med - High |
| 5.0mm | Zinc Steel Sheet | 0.8mm | High (up to 2,600 RPM) | Light |
| 8.0mm | Zinc Steel Sheet | 0.8mm | High (up to 2,600 RPM) | Light |
| 12.0mm | Zinc Steel Sheet | 0.8mm | High (up to 2,600 RPM) | Light - Med |
| 5.0mm | Mild Steel Flat Bar | 3.0mm | High (up to 2,600 RPM) | Light - Med |
| 8.0mm | Mild Steel Flat Bar | 3.0mm | High (up to 2,600 RPM) | Med |
| 12.0mm | Mild Steel Flat Bar | 3.0mm | High (up to 2,600 RPM) | Med |
| 5.0mm | Mild Steel Flat Bar | 6.0mm | Med - High (up to 2,400 RPM) | Light - Med |
| 8.0mm | Mild Steel Flat Bar | 6.0mm | Med - High (up to 2,400 RPM) | Med |
| 12.0mm | Mild Steel Flat Bar | 6.0mm | Med - High (up to 2,400 RPM) | Med |
| 5.0mm | Mild Steel Flat Bar | 10.0mm | High (up to 2,600 RPM) | Med |
| 8.0mm | Mild Steel Flat Bar | 10.0mm | High (up to 2,600 RPM) | Med |
| 12.0mm | Mild Steel Flat Bar | 10.0mm | Med (up to 1,500 RPM) | Med |
| 5.0mm | Stainless Sheet SS316 | 0.8mm | High (up to 2,400 RPM) | Light - Med |
| 8.0mm | Stainless Sheet SS316 | 0.8mm | High (up to 2,400 RPM) | Light - Med |
| 12.0mm | Stainless Sheet SS316 | 0.8mm | High (up to 2,400 RPM) | Light - Med |
| 5.0mm | Stainless Flat Bar SS316 | 3.0mm | High (up to 2,400 RPM) | Med |
| 8.0mm | Stainless Flat Bar SS316 | 3.0mm | Med (up to 1,300 RPM) | High |
| 12.0mm | Stainless Flat Bar SS316 | 3.0mm | Slow (up to 650 RPM) | High |

Scan QR Code for more product information, videos and testing data



For product warranty information and Alpha Tool's policies, please visit www.alphatools.com.au/warranty-policy/