

CORDLESS DRILL/DRIVER

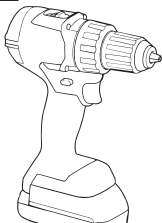
MILD STEEL FLAT BAR - 10.0mm

DRILL BIT - 12.0mm

YOU WILL NEED



Alpha ONSITE+
Step Tip Drill Bit



Cordless Drill/Driver



Alpha Liquid Gold
Cutting Fluid



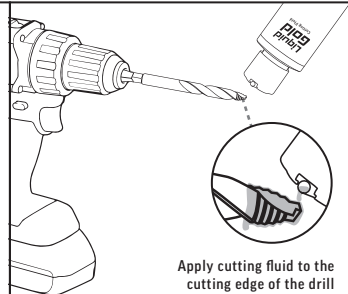
Personal Protective
Equipment (PPE)



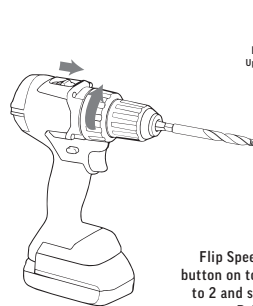
BEST PRACTICE GUIDE



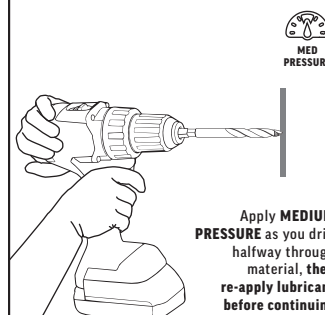
No need to Pilot Drill as
the unique design of the
Step Tip Drill bit
eliminates pre-drilling



Apply cutting fluid to the
cutting edge of the drill
bit to lubricate cut
against heat and friction



Flip Speed setting
button on top of drill
to 2 and set Torque
on Drill setting



Apply **MEDIUM
PRESSURE** as you drill
halfway through
material, then
re-apply lubricant
before continuing

DRILL DIAMETER	MATERIAL	MATERIAL THICKNESS	TESTING TOOL	TEST SPEED / TORQUE RECORDED	SPEED	PRESSURE	IMPACT	HOLES	BLUNT / RETIRED
12.0mm	Mild Steel Flat Bar	10.0mm	Makita Drill/Driver DF001GZ 40V 5.0Ah Battery	50% of fast	Med (up to 1,500rpm)	Med	N/A	182	Blunt

TIME TEST - DRILLING 5 HOLES

4:03

NOTES:

Continual lubrication recommended

IMPACT DRIVER

MILD STEEL FLAT BAR - 10.0mm

DRILL BIT - 12.0mm

NOT RECOMMENDED

5 HOLES

YOU WILL NEED



Alpha ONSITE+
Step Tip Drill Bit



Impact Driver



Alpha Liquid Gold
Cutting Fluid



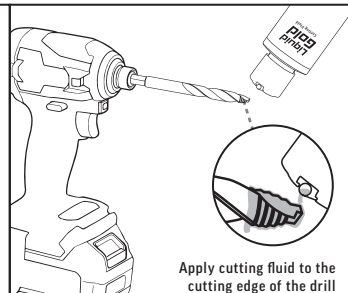
Personal Protective
Equipment (PPE)



BEST PRACTICE GUIDE



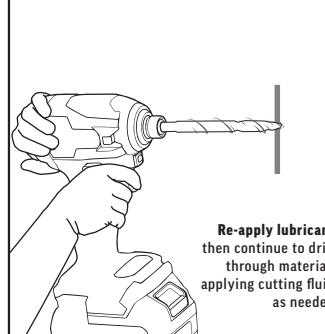
No need to Pilot Drill as
the unique design of the
Step Tip Drill bit
eliminates pre-drilling



Apply cutting fluid to the
cutting edge of the drill
bit to lubricate cut
against heat and friction



Apply **MEDIUM
PRESSURE** as you drill
at **MEDIUM - HIGH
SPEED** until halfway
through the material



Re-apply lubricant
then continue to drill
through material,
applying cutting fluid
as needed

DRILL DIAMETER	MATERIAL	MATERIAL THICKNESS	TESTING TOOL	TEST SPEED / TORQUE RECORDED	SPEED	PRESSURE	IMPACT	HOLES	BLUNT / RETIRED
12.0mm	Mild Steel Flat Bar	10.0mm	Makita Drill/Driver DF001GZ 40V 5.0Ah Battery	75% of Max Speed	Med - High (up to 2,400rpm)	Med	High	5	Blunt

TIME TEST - DRILLING 5 HOLES

5:36

NOTES:

Continual lubrication needed